



Model



Model



Model



Model



Model



Model

18 Conference rooms · Total capacity: 1,500 people · 585 rooms

For more information, fill out the quote request form or contact us at: +34 91 388 79 59 or by email: events.madrid@riu.com

Riu Plaza España Hotel next opening June 2019

The new Riu Plaza España Hotel, an iconic building situated on the Big Track, right in the heart of Madrid, is to become the new flagship of RIU in the Spanish capital. Following a complete overhaul, while preserving its historic character, the hotel is being reborn with the firm aim of becoming an icon of the city once again. Its modern facilities and the quality of RIU service make a comfortable stay both for visitors traveling on business and those seeking to explore the city.

Your next event will be a guaranteed success

There will be a wide range of conference and event rooms. Its more than 5000 m² of space provides enormous flexibility for different configurations and a maximum capacity of up to 1,500 people. The rooms will feature the latest technologies and spectacular views of the city as well as the assistance of a large team of experienced professionals who will always make your event a sure-fire success.

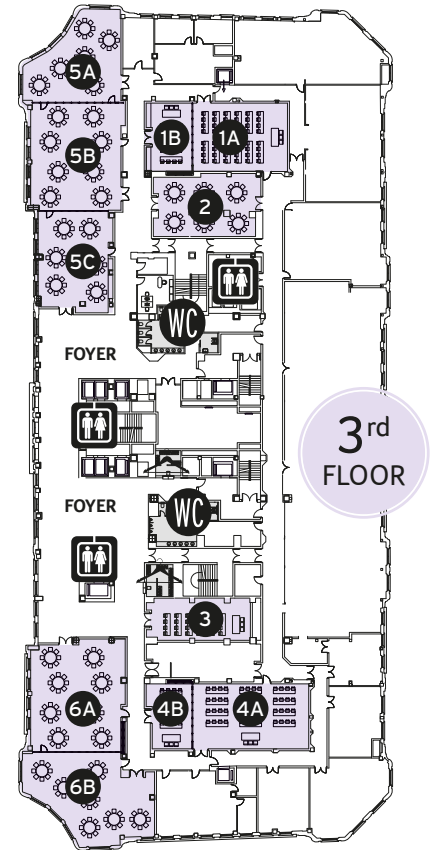
High-end facilities

This new hotel will feature 585 comfortable rooms and suites equipped with the best amenities and an impressive Presidential Suite covering 168 m² and 60 m² with a terrace enjoying spectacular views. A variety of sophisticated bars and restaurants will entice you to share great times and enjoy the finest cuisine. At the very top of the building, and enjoying 360° panoramic views of the city, will be the exclusive Sky Bar on the 25th and the Roof Terrace on the 26th floor where you can immerse yourself in a pleasant, chilled-out atmosphere and enjoy sophisticated cocktails.

EVENT AND MEETING ROOMS

3rd floor

ROOMS	Area (m ²)	Banquet 8	Banquet 10	Cabaret	Classroom	Theater	Boardroom	U Shape	Reception	Buffet
1A Cibeles	105	64	70	36	48	90	40	36	70	36
1B Puerta del Sol	50	24	30	24	24	28	12	18	35	
1AB C + PS	155	88	100	60	72	118	52	54	105	40
2 Plaza Mayor	101	64	70	36	48	90	40	36	70	40
3 Chamberi	72	56	60	36	40	60	36	36	60	
4A Neptuno	121	64	70	40	60	110	35	40	110	40
4B Puerta de Alcalá	45	24	30	24	24	28	12	18	40	0
4AB N + PA	166	88	100	40	70	160	47	58	150	40
5A Princesa	112	36	60	36	44	80	20	28	110	36
5B Colón	157	64	60	40	48	105	40	36	150	48
5C Retiro	113	36	60	36	44	80	20	28	110	36
5AB P + C	269	100	120	76	92	185	60	64	260	84
5ABC P + C + R	382	136	180	112	136	265	80	92	370	120
5BC C + R	270	100	120	76	92	185	60	64	260	84
6A Callao	158	64	60	40	48	105	40	36	140	48
6B Gran Vía	147	56	60	40	45	90	36	36	120	48
6 AB C + GV	305	120	120	80	93	195	76	72	260	96
Foyer	720	300	320						600	



4th floor

ROOMS	Area (m ²)	Banquet 8	Banquet 10	Cabaret	Classroom	Theater	Boardroom	U Shape	Reception	Buffet
Madrid 1	358	200	220	150	200	350	100	96	340	120
Madrid 1-2	620	344	370	260	320	600	150	150	550	230
Madrid 1-3	1046	544	590	410	520	1000	275	250	850	330
Madrid 1-4	1306	688	750	512	648	1240	345	320	1080	418
Madrid 1-5	1593	848	920	632	798	1540	433	408	1330	538
Madrid 2	262	144	150	110	120	250	50	54	210	110
Madrid 2-3	688	344	370	260	320	650	175	154	510	210
Madrid 2-4	948	488	530	362	448	890	245	224	740	298
Madrid 2-5	1235	648	700	482	598	1190	333	312	990	418
Madrid 3	426	200	220	150	200	400	125	100	300	100
Madrid 3-4	686	344	380	252	328	640	195	170	530	188
Madrid 3-5	973	504	550	372	478	940	283	258	780	308
Madrid 4	260	144	160	102	128	240	70	70	230	88
Madrid 4-5	547	304	330	222	278	540	158	158	480	208
Madrid 5	287	160	170	120	150	300	88	88	250	120

